

Program Primer

School Year
2025-2026



CambridgePhilippines



www.cambridge.com.ph



CAMBRIDGE
PRE-SCHOOL

WELCOME TO CAMBRIDGE PHILIPPINES

At Cambridge Philippines, we believe that education is a partnership between parents, students, and educators. Together, we can create a nurturing and stimulating environment where every child can thrive and reach their full potential.

We value your involvement and encourage you to actively participate in your child's educational journey. We understand that each child is unique, with individual strengths, interests, and challenges.

Our dedicated team of experienced teachers and staff is committed to providing high-quality education that fosters academic excellence, character development, and personal growth.

We have carefully designed our curriculum to align with the latest technology and international standards in education while nurturing critical thinking, creativity, and a love for learning.

As we navigate the new school year, let us foster an atmosphere of respect, understanding, and kindness.

Let's make this a successful and memorable year filled with growth, achievement, and wonderful experiences.

Have a good School Year ahead!



INNOVATIVE CREATORS THROUGH iSTEAM

Given the rapid pace of numerous advancements, identifying the precise job skills that will be in demand in the future becomes challenging. Nevertheless, it remains evident that refining distinctly human skills, which are not readily replicable by machines and AI, will be crucial. The ability to innovate, problem-solve, and think creatively and critically will be essential.



Our **PBEM x iSTEAM** curriculum is a modern approach to education that exposes children to **iSTEAM (Innovation, Science, Technology, Engineering, Arts and Mathematics)** through experiential learning and real-world problem-solving, fostering the development of essential future skills in fun and age-appropriate ways, while encouraging creative solutions.



iSTEAM embraces the philosophy of “**thinking with hands**” and consists of hands-on inquiry and **open-ended exploration** of interesting topics in fun and age-appropriate ways to prepare your child for future success.



PROGRAM OFFERINGS

Our preschool programs cater to each child's developmental needs with personalized, hands-on learning experiences linked to real-life situations. We draw on educational theories such as Multiple Intelligences, Ecological Systems, the Vygotskian Framework, and Montessori Methods.

PRE TODDLER

10 months old to 1.5 years old
Classes are twice a week

TODDLER

1.6 to 2.5 years old
3x or 5x a week, 2 hours a day

JUNIOR NURSERY

2.6 to 3.11 years old
5x a week, 3 hours a day

SENIOR NURSERY

4 to 5 years old
5x a week, 3 hours a day

KINDER

5 to 6 years old
5x a week, 3 hours a day

ENRICHMENT PROGRAMS

Selected Cambridge centers offer:

- Mandarin (Select Cambridge Centres)
- Reading Lab
- Arts
- Movement & Fitness



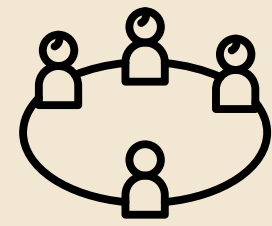
THE CAMBRIDGE ROUTINE

The Cambridge Routine is a structured educational approach that emphasizes holistic development and individualized learning. It underscores the importance of routines in fostering children's stability, academic growth, and social skills. By integrating teacher-led instruction, hands-on activities, and collaborative learning experiences, it nurtures critical thinking, creativity, and effective communication. This methodology aims to prepare students as lifelong learners equipped for success in a dynamic world.

1 INDIVIDUALIZED INSTRUCTION 30-45 minutes

A small group classes that focuses on skills, particularly **math, reading, language, writing, fine motor** and **practical life skills**.

2 CIRCLE TIME 15-20 minutes



To develop the social and language skills of the students through morning greetings, singing and dancing to nursery rhymes and songs.

3 PBEM X iSTEAM 30-45 minutes



Students are given a specific theme/topic every term. The students create projects based on their discussions, research, experiments and fieldwork during this period.

4 SNACK TIME 10-20 minutes



Students are encouraged to be independent as they set up their tables, serve food and drinks, eat on their own, and pack away after.

5 GROOMING TIME 10-15 minutes



Students are taught self help skills such as brushing their teeth, dressing and undressing, packing away, and folding clothes.

6 STORY TIME & DISMISSAL 10-20 minutes

Students are encouraged to read stories independently and as a group. This can help improve the students' reading and speaking skills.

TERM TOPICS

FOR TODDLERS TO KINDER

TERM 1

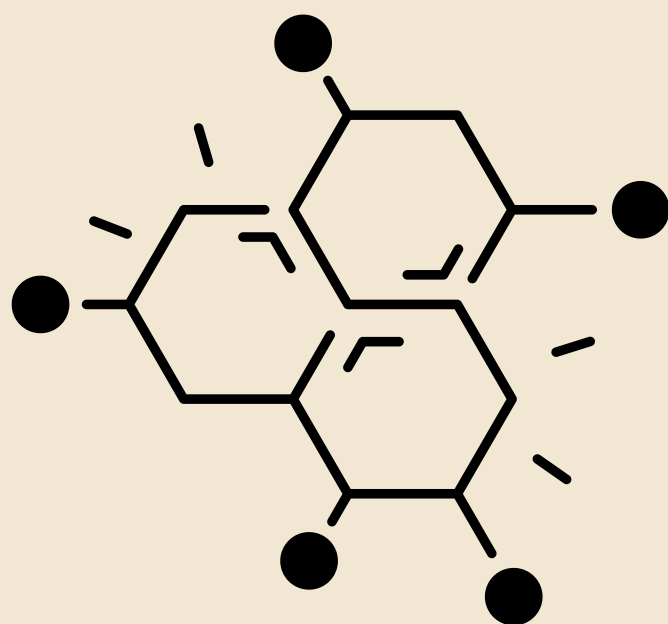


SUSTAINABILITY

Nature Guardians:

Focuses on cultivating in children an understanding of environmental stewardship. Through engaging activities, students will learn the importance of resource conservation, waste reduction, and the protection of nature to foster a commitment to a sustainable future.

TERM 3

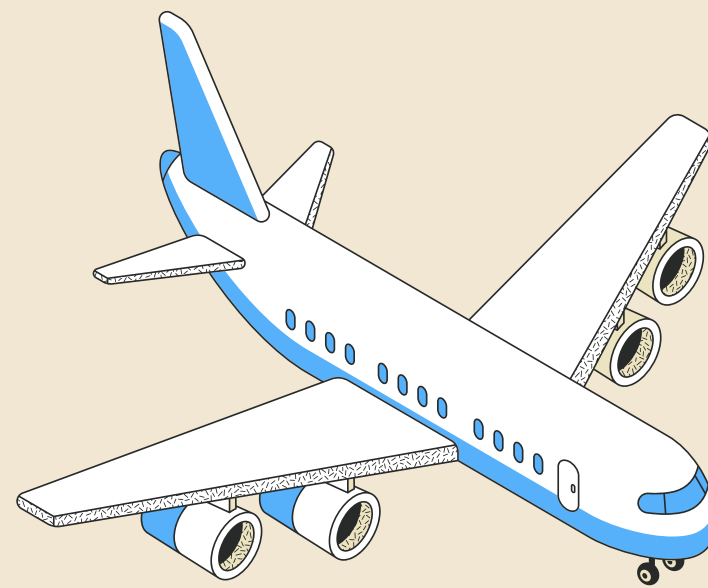


STRUCTURES

Building Blocks of Our World:

Provides young learners with an introduction to diverse types of buildings, bridges, and other constructions. They will learn about the principles of design and engineering that ensure these structures are strong, safe, and functional for everyday use.

TERM 2

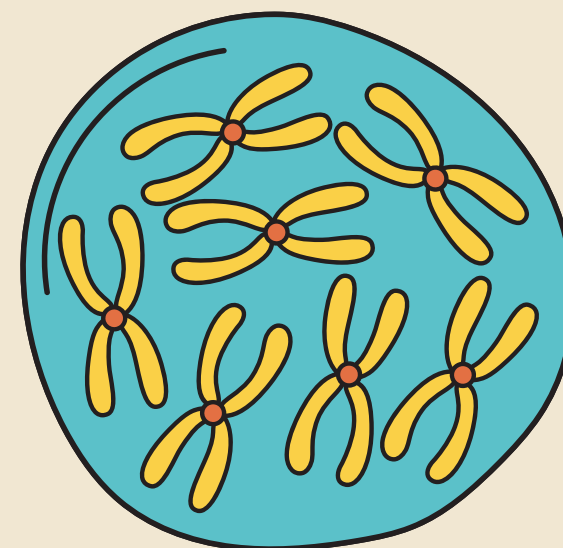


AERODYNAMICS

Air in Motion:

Children will be introduced to the fundamental principles of aerodynamics. They will explore the science of air and its impact on the movement of various objects, such as airplanes and cars, thereby developing an understanding of how things achieve flight and move efficiently through the air.

TERM 4 SUMMER



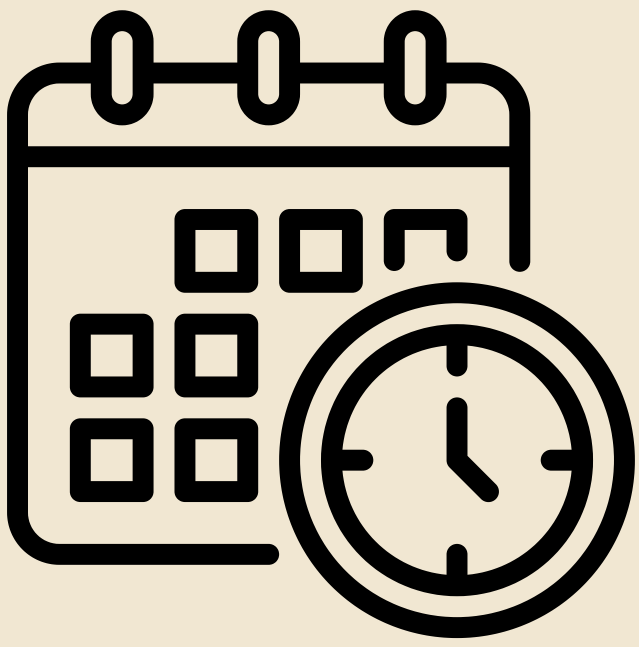
LIVING THINGS

The Wonders of Life's Blueprint:

Embark on an exploration of the natural world, encompassing animals, plants, and humans. They will learn the defining characteristics of living organisms, the processes of growth, and the essential elements required for health and thriving.

Reflecting our Project-Based Ecological Model (PBEM) and iSTEAM approach, these SY 2025–2026 term topics—Sustainability, Aerodynamics, Structures, and Living Things—offer rich, real-world contexts for inquiry, innovation, and ecological awareness, fostering interdisciplinary connections and a deep respect for the world.

ENROLLMENT PROCESS



SCHEDULE A FREE 3-DAY TRIAL/ASSESSMENT

Schedule a trial class with the Director/ress of your preferred center. Schedules are on a **first confirm-first serve** basis for slots are limited.

JOIN THE TRIAL CLASS

After the Free 3-day trial, the teacher will discuss the observations during the trial and how Cambridge Philippines can further enhance your child's learning experience.



ENROLLMENT REQUIREMENT

The following will be sent by the Director/ress to be completed:

- Enrollment Form
- Tuition Fee Agreement Form
- Fetcher's Card
- Bank Details
- Amount to Pay
- Parent Handbook

- Accomplished Forms
- Birth Certificate
- Immunization Records

RETURN THE FOLLOWING

- Proof of Payment
- Signed Parent Handbook Receiving Copy



PAYMENT VERIFICATION

Once payment has been verified, you will receive an Official Receipt (OR).

HEALTH AND SAFETY PROTOCOLS

New protective measures in place to safeguard your precious ones. While the **Department of Education** and **IATF** have mandated that all-preschools implement safety measures that adhere to the minimum health protocols, we have gone above and beyond to provide additional protection for you child.



UV CARE

Even before the pandemic, all Cambridge Centres use Ultra Violet Light Technology to effectively kill 99.9% of harmful bacteria, viruses, germs, allergens and molds.

HEPA FILTERS/ AIR PURIFIER & HUMIDIFIER

We installed Hepa Filters in every air conditioning unit , which removes dust, pollen, bacteria and other airborne particles that may be harmful to the health of the children and teachers.



NON-CONTACT THERMAL SCANNER

Cambridge Philippines utilizes a non-contact thermal scanner at the entrance, a safety measure implemented even before the pandemic, to monitor children's temperatures upon arrival. Additionally, we keep a portable scanner on hand to be used during classes.

HAND WASHING

The washing area at the center is conveniently situated near the entrance, allowing children to promptly wash their hands upon arrival. This ensures proper hygiene and cleanliness before entering the center.

